



Supernova Craftinsure Northern Traveller Series
Open meeting at Winsford Flash.
7th June 2025.



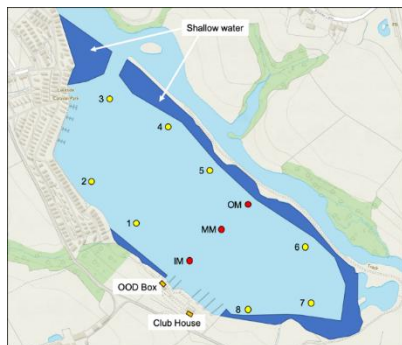
Supernova Open meeting at Winsford Flash Sailing Club (WFSC) – Cheshire, Saturday 6th June 2025

By Ian Coverdale (WFSC Supernova Fleet Capt) 8th June 2025

Supernova Open

An overcast Saturday in Cheshire with a just 14 °C on the mercury. and a forecast for a westerly breeze veering to North-westerly at 10 to 15 knots by about 1pm. As the day unfolded the Race Officer (RO) Jon Close (and indeed all helms taking part) faced several changes as the wind strength and direction which varied throughout the day, with occasional showers.

The club is in the centre of the county of Cheshire and sails on a 90 acre lake fed by the river Weaver and at the head of the Weaver navigation in the picturesque area of Cheshire known as ‘The Cheshire Broads’. On the day the event attracted 11 boats, with 3 visitors travelling to the club.



Picture : WFSC (Website)



Picture : Carl Ellis (WFSC)

RO Jon Close held the race briefing, explaining sailing instructions and the racing area, identifying the configuration of marks and known shallow areas at the NW-N side of the Flash where the river enters the Flash.



Supernova Craftinsure Northern Traveller Series
Open meeting at Winsford Flash.
7th June 2025.



Race 1

The first race Started at 11 am and no false starts/infringements at the line. From the start, M2 was the windward mark and provided a good beat up the lake. Wind was variable throughout the race with the most challenging area being around M8 which was in the lee of the bank and trees at the time. The final result was Eric Haselden(1st) followed by Duncan Cheshire and David Williams-Baldwin.



Pictures: Brian Herring (WFSC)

There was a well-earned break for lunch, Alison Coverdale & Claudie Black (The galley team) put on a fantastic hot lunch of Beef chilli or vegetarian 3-bean chilli with baked potatoes, with a selection of home-made cakes as desert, with tea or coffee.

Race 2

Started at around 12 noon with the same course set by the RO. Stronger wind was prevalent at the start accompanied by some heavy rain, which passed and was followed by reduced wind, although still reasonable sailing conditions. M8 remained most problematic with shelter form the shore.

Eric Haselden took line honours again, this time followed by Tony Bleasdale (2nd) and Jonathan Latham (3rd). With two wins in the bag Eric decided to take some well-earned rest and time to watch the final race of the day from the shore.



Supernova Craftinsure Northern Traveller Series
Open meeting at Winsford Flash.
7th June 2025.



Pictures: Brian Herring (WFSC)

Race 3

Started around 2pm, with the same course and slightly lighter wind and no rain (at the start). With Eric watching from the shore, Jonathan Latham crossed in 1st position, with Tony Bleasdale (2nd) and Richard Duncan (3rd)



Pictures: Brian Herring (WFSC)

Race Summary

Overall there was good competition between the lead boats and the battle for 2nd and 3rd was fought closely. Duncan Cheshire (4th) missed the podium by 1 point, and 2nd and 3rd were separated only by place difference with matching overall points scored, but after discards, Tony managed to take the silver at this event.

Congratulations to Eric Haselden on achieving a convincing double first to win overall without the need to sail in the third race.



Supernova Craftinsure Northern Traveller Series
Open meeting at Winsford Flash.
7th June 2025.



Closing comments and thanks

The day was concluded by prize-giving and a very welcome afternoon tea and additional cake or biscuits for all with Eric Haselden (1296) overall winner, Tony Bleasdale (1254) 2nd, and Jonathan Lathan (1321) 3rd. Many thanks went to the race team, safety crews, and galley team whom all did a stellar task of operations behind the scenes and on the water to ensure a successful event.



Pictures: Carl Ellis (WFSC)



Supanova Open WFSC 2025

WFSC



Results are final as of 21:04 on June 7, 2025

Overall

Sailed: 3, Discards: 1, To count: 2, Entries: 11, Scoring system: Appendix A

Rank	Class	SailNo	Club	HelmName	Rating	Race 1	Race 2	Race 3	Total	Nett
1st	SUPERNOVA	1296	Winsford flash SC	Eric Haselden	1075	1.0	1.0	(12.0 DNC)	14.0	2.0
2nd	SUPERNOVA	1254	Girton SC	Tony Bleasdale	1075	(5.0)	2.0	2.0	9.0	4.0
3rd	SUPERNOVA	1321	Winsford Flash SC	Jonathan Latham	1075	(4.0)	4.0	1.0	9.0	5.0
4th	SUPERNOVA	1281	Chelmarsh SC	Duncan Cheshire	1075	2.0	3.0	(5.0)	10.0	5.0
5th	SUPERNOVA	519	Winsford Flash SC	David Williams-Baldwin	1075	3.0	(5.0)	4.0	12.0	7.0
6th	SUPERNOVA	494	Winsford Flash SC	Richard Duncan	1075	6.0	(7.0)	3.0	16.0	9.0
7th	SUPERNOVA	1299	NLH SC	Daniel Brown	1075	7.0	(8.0)	6.0	21.0	13.0
8th	SUPERNOVA	1241	Winsford Flash SC	Frank Lafferty	1075	(10.0)	6.0	7.0	23.0	13.0
9th	SUPERNOVA	1272	Attenborough SC	Andrew Goodman-Smith	1075	(9.0)	9.0	8.0	26.0	17.0
10th	SUPERNOVA	1047	Winsford Flash SC	Ian Coverdale	1075	8.0	(10.0)	9.0	27.0	17.0
11th	SUPERNOVA	511	Winsford Flash SC	Mike Hughes	1075	(11.0)	11.0	10.0	32.0	21.0

Scoring codes used

Code	Description	Points
DNC	Did not come to the starting area	12